



**BRAVE SPIRITS THEATRE  
ARCHIVE**

DESIGN: COSTUME PRESENTATION  
*The Changeling*  
2018

**Director:** Charlene V. Smith  
**Costume Designer:** Madeline Belknap

**Artistic Director:** Charlene V. Smith  
**Resident Dramaturg:** Claire Kimball

-----

Brave Spirits Theatre is providing these early modern theatre resources free of charge for educators, students, and theatre practitioners for research purposes only. All design, directing, and dramaturgical work is the intellectual property of the artist who created it. Any use of this work in future productions is forbidden unless the express permission of the artist is obtained.

Scripts in Word document format and scene charts in Excel are available for open source use and adaptation. You are also welcome to consult BST's script edits and doubling tracks for research or production. This page and other identifying markers should not be removed from PDF files.

If you found this document helpful in your research or practice, please consider donating to Brave Spirits Theatre at ([bravespiritstheatre.com/support](http://bravespiritstheatre.com/support)) to help support the company and these archives.

## Isabella



Isabella's blazer will be a loud color so she'll fit into the subplot world, but her puppet will still be visible against her costume. Underneath, she'll be wearing a simple patterned dress. I also gave her the peplum to cinch her waist, and create a look that can hopefully translate to a period corset. When she enters dressed as a madwoman in 4.3, that is her puppet, correct?

## Antonio and Franciscus



Antonio and Franciscus will wear simple patterned jackets to fit into the subplot, while wearing the monochrome 3 piece suit underneath to fit the main plot .

## Albius



For the subplot scenes, Albius will wear a long doctor's coat, we can dye it an interesting color and colorful accents in places on his coat to connect him to the subplot characters.

## Lollio



Lollio will have the costume with the most patterns. I'd like it to look patched together and distressed, but attempting to be as put together as the main plot characters.



The can can puppets can continue the bold colors and pattern theme, and adding historical pieces could easily work, because the costumes should seem like found pieces anyway.

**Pedro,**



**Jasperino**

Although Pedro appears in the subplot scenes, I would like him to reflect the main subplot. Both he and Jasperino will be wearing a regular cut light monochrome 2 piece suit (no vest). The lighter color will show their status as lower than the others but their clean cut suits will show that they are still high status.

**Alsmiro,  
Vermandero**



These two characters will wear a longer clean cut suit jacket for their three piece suit each in a different darker color to show their higher status.

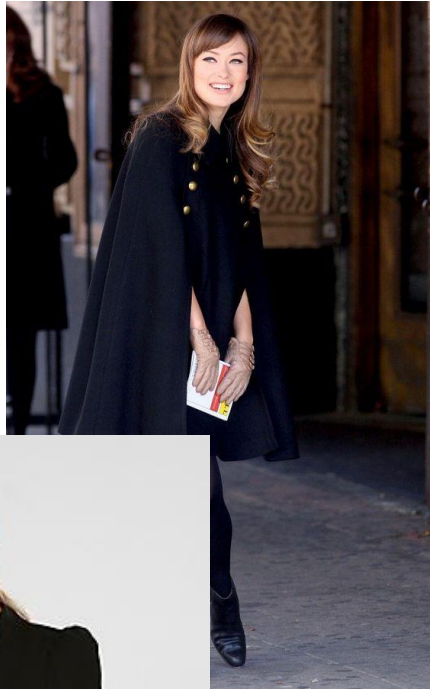


**Alonzo, Tomazo**



These two also have a higher status, so they'll be in the darker color scheme, but I want them to have a more classic 3 piece suit look. Alonzo ghost white version of same suit??

Beatrice-Joanna



Darker color to show bodice separate from

status, cool cape, skirt